

Mayor Drotzmann called the meeting to order at 5:00pm. Councilors Smith and McCarthy arrived at 5:05PM. City staff in attendance included: Assistant City Manager Mark Morgan, Finance Director Mark Krawczyk, Ron Sivey, Bill Schmittle, Roy Bicknell, and Heather La Beau. Mike Lees from Anderson Perry was also present.

## **Assistant City Manager Mark Morgan: Discussion of Possible 4-Way Stops**

There are two 4-Way Stops proposed for approval at tonight's City Council meeting. The proposed locations are at the intersection of E Oregon Ave and NE 6<sup>th</sup> St and at the intersection of W Joseph Ave and SW 10<sup>th</sup> St. Both of these residential areas have seen a large increase in the number of homes built.

The intersection of E Diagonal Blvd and NE 10<sup>th</sup> St is being reviewed to make a 4-Way Stop. This area is not currently developed. A preliminary plat has been submitted for property at this intersection. An off-street pedestrian path is proposed along the NE 10<sup>th</sup> frontage of the property. More research is being conducted by the city engineer, including traffic counts.

## **Mike Lees: Sewer Collection System Evaluation Update**

The sewer collection system master plan evaluation is included in the 5-year Capital Improvement Plan. The sewer section of the CIP has no additional appendixes due to the sewer collection plan being so outdated.

The sanitary sewer collection study prioritizes improvements to include in the CIP. The study will be completed by the end of August. Data was taken from discharge monitoring reports, lift station data and lift station inspections including the wet wells, electrical components and pumps. The study looks at the conveyance system that transports the sewage to the treatment plant. The city's collection system is quite large, so the city was divided into basins for the study. A map was shown of the basins and is attached.

The integrity of the system collection piping was analyzed as part of the study. A TV inspection was performed on piping from the monthly bad lines report to determine infiltration sources, roots, and pipe sags. Numerous pipe sags and deteriorated pipe segments were discovered. The study will provide cost analysis for repair and/or replacement.

Capacity analysis was another portion of the study. Slope, type and diameter are considered in the capacity analysis. A gallons per acre per day metric was determined for each basin. 410 to over 500 gallons per acre per day was the range. Potential bottlenecks will be proposed as future projects.

Some of the lift stations have surpassed their useful life. Lift station #3, for example, is very small and serves few customers. It is located on Hwy 395, causing safety concerns for maintenance. An option being reviewed is to decommission this lift station and transitioning it into the gravity portion of the system. Lift station #4 is very old and has high maintenance costs. The west side lift station flow controller is not replaceable and is proposed to be updated. All the cost estimates will be provided in the study.

## **Safe Route to School Grants**

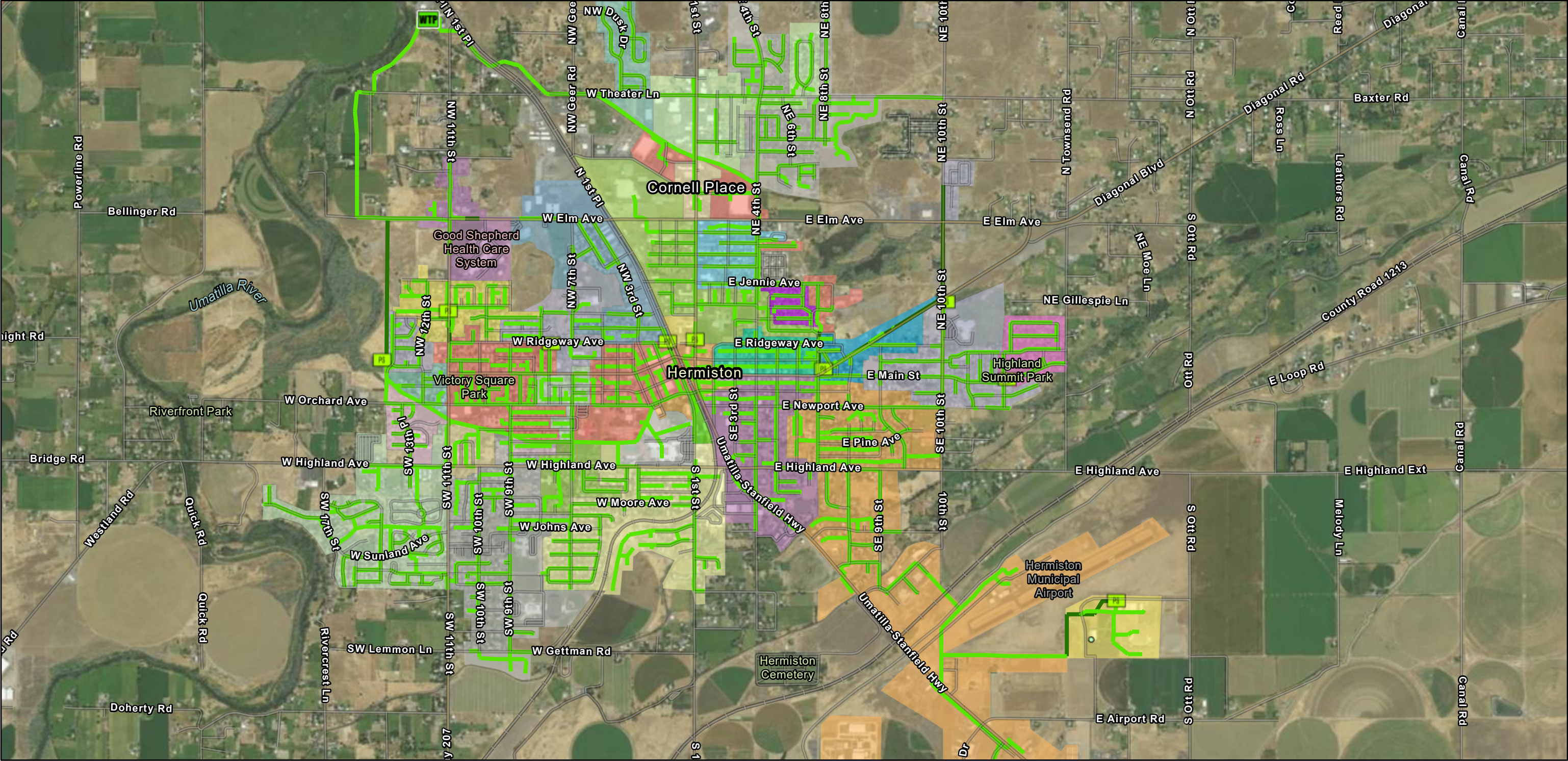
The city has previously submitted applications for the portion of NE 10<sup>th</sup> between Diagonal Blvd and E Elm Ave. There have been 3 fatal pedestrian vehicle accidents on 11<sup>th</sup> St between W Highland and W Orchard Ave since 2009. There is no sidewalk on a portion of the frontage and there are apartments and businesses in the area. ODOT will apply for two of the components to the Safe Route to School program for this area.

## **Adjourn**

There were no other items of discussion and the meeting was adjourned at 5:55pm.



# City of Hermiston Collection System Basin Map



7/29/2020, 2:46:31 PM

OSIP\_2017\_WM

Red: Band\_1

Green: Band\_2

Blue: Band\_3

ssNetworkStructure

Grease Separator



Lift Station



Treatment Plant



ssGravityMain



ssPressurizedMain

ssBasin

E1

E10

E11

E12

E13

E14

E15

E16

E2

E3

E4

E5

E6

E7

E8

E9

E10

E11

E12

E13

E14

E15

E16

E17

E18

E19

E20

E21

E22

E23

E24

E25

E26

E27

E28

E29

E30

E31

E32

E33

E34

E35

E36

E37

E38

E39

E40

E41

E42

E43

E44

E45

E46

E47

E48

E49

E50

E51

E52

E53

E54

E55

E56

E57

E58

E59

E60

E61

E62

E63

E64

E65

E66

E67

E68

E69

E70

E71

E72

E73

E74

E75

E76

E77

E78

E79

E80

E81

E82

E83

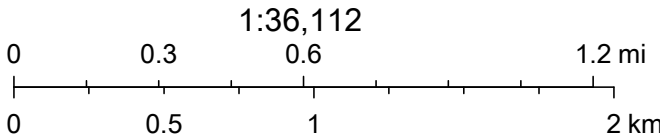
E84

E85

E86

E87

E88



Source: Esri, Maxar, GeoEye, Earthstar Geographics, CNES/Airbus DS, USDA, USGS, AeroGRID, IGN, and the GIS User Community, Oregon Statewide Imagery Program (OSIP) - Oregon Imagery Framework Implementation Team, Sources: Esri, HERE, Garmin,