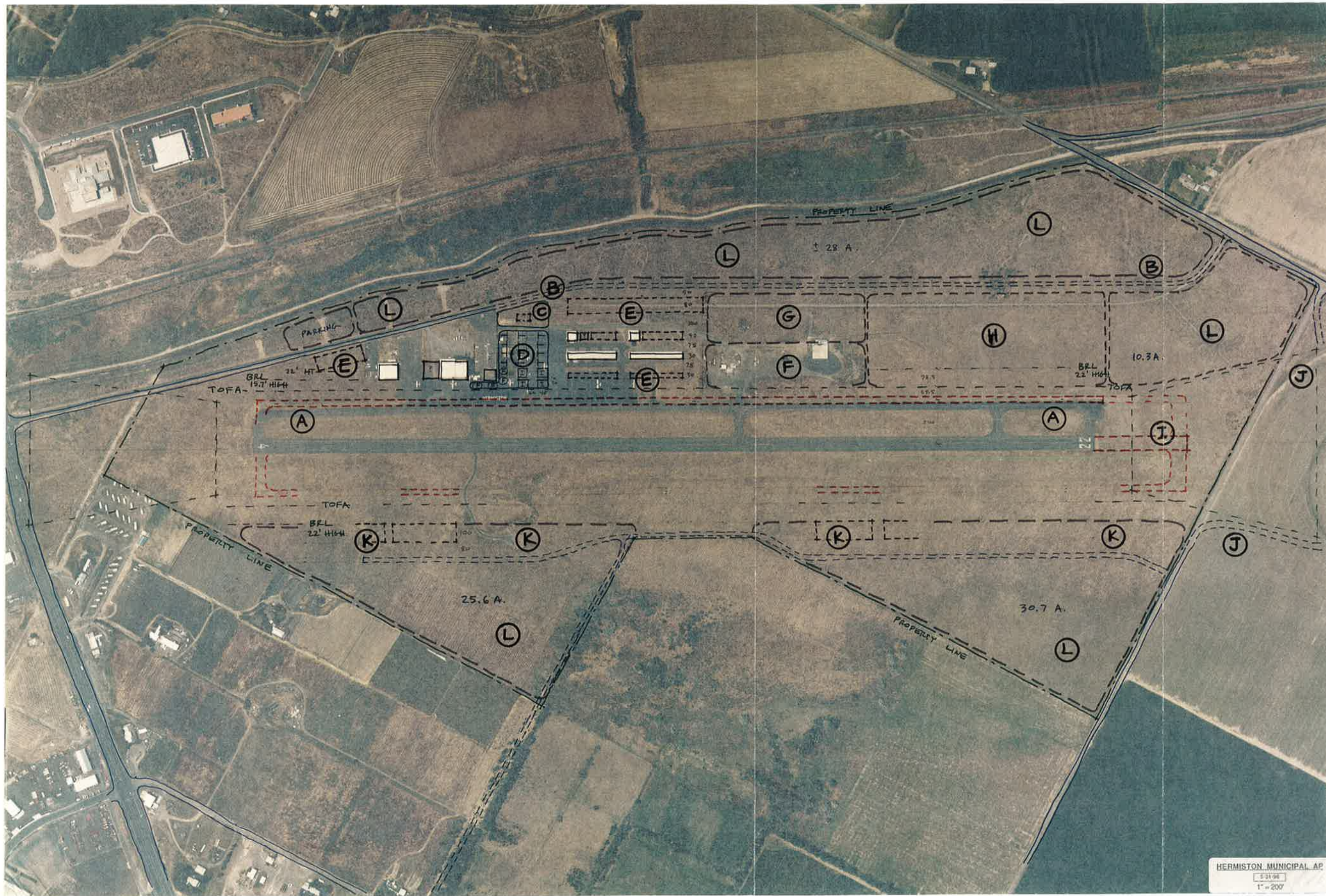


August 24, 1999

**Hermiston Municipal Airport
Airport Layout Plan Options**

Key for use in attached Concept Plan

- A. Relocate parallel taxiway to meet FAA standards for current design aircraft BII (240 feet taxiway centerline to runway centerline). This also results in relocated Aircraft Parking Line (305.5 feet from runway centerline = 240 foot parallel taxiway centerline +65.5 feet to clear taxiway OFA).
- B. Relocate interior gravel road centerline to 560 feet from Aircraft Parking Line to create adequate ramp and hangar area with practical layout for future developments.
- C. Relocate Caretaker House (note: Terminal Plan Option B does not relocate the house).
- D. Revise apron area to include prior caretaker area.
- E. Hangar expansion areas.
- F. Maintain agricultural ramp area where it is and allow for expansion.
- G. Create agricultural lease area for offices, storage, and related uses.
- H. Create reserve general aviation hangar, ramp, and FBO area to east of ag area.
- I. Reserve for future 500 foot runway extension.
- J. Acquire RPZ and relocate Ott Road around it.
- K. Designate major aviation related industrial areas on remaining property where it has good access from runway, to allow for economic development efforts for attracting industry to the airport.
- L. Designate major non-aviation related industrial areas on remaining airport property, to allow for economic development efforts for attracting industry to the airport.



ARON
FAEGRE
AND
ASSOCIATES
520 S.W. YAMHILL
PORTLAND
OREGON
97204
503-222-2546

with
CENTURY WEST
ENGINEERING, &
GAZELEY & ASSOC.

AIRPORT LAYOUT PLAN UPDATE

HERMISTON AIRPORT

CITY OF HERMISTON, OREGON

CONCEPT
AIRPORT PLAN

DRAWN BY: AF CHECKED BY: AF
DATE: 8-24-99 PLOT FILE NAME: HERMS1.DWG

PAGE:

A1.1

1 AIRPORT LAYOUT PLAN DESIGN OPTIONS
SCALE: 1 INCH = 500 FEET

